

REVISION AT
DO NOT SCALE
FROM THIS PRINT

TABLE 1
CONTACT SPECIFICATION

	-XX	-S, -D, -T	-S-RA	-D-RA	-T-RA
-01	C-15-1-X	N/A	N/A	N/A	N/A
-02	C-15-2-X	C-15-2-X	C-15-2-X	C-15-2-X	C-15-2-X
			C-15-3-X	C-15-3-X	C-15-3-X
-03	C-15-3-X	C-15-3-X	C-15-3-X	C-15-4-X	N/A
-04	C-15-4-X	C-15-4-X	N/A	N/A	N/A
-21	C-60-1-X	N/A	N/A	N/A	N/A
-22	C-60-2-X	C-60-2-X	C-60-2-X	C-60-2-X	C-60-2-X
			C-60-3-X	C-60-3-X	C-60-3-X
			C-60-4-X	C-60-4-X	C-60-4-X
-23	C-60-3-X	C-60-3-X	C-60-3-X	N/A	N/A
-24	C-60-4-X	C-60-4-X	N/A	N/A	N/A

UNLESS OTHERWISE NOTED
DIMENSIONS ARE IN INCHES TOLERANCES ARE:

ONE PLACE DECIMALS ±	THREE PLACE DECIMALS ± .005 [.13]	ANGLES ± 2°
TWO PLACE DECIMALS ± .01 [.25]	FOUR PLACE DECIMALS ±	

TITLE: ASSEMBLY, SOCKET STRIP
.025 [.64] SQ. TAIL
DWG NO: SSQ-1XX-XX-XX-X-XX-XXX-XX-XX
SHEET 1 OF 3

SSQ-1XX-XX-XX-X-XX-XXX-XX-XX

BODY LENGTH SPEC
-01 THRU -50
("A" = XX/10 + .020 [.51])

CONTACT SPECIFICATION
(SEE TABLE 1)
-01 THRU -04 (STANDARD INSERTION FORCE)
-21 THRU -24 (LOW INSERTION FORCE)

PLATING SPECIFICATION
-G: GOLD- SPECIFY -G IN CONTACT SUFFIX -XX
-T: TIN- SPECIFY -T IN CONTACT SUFFIX -XX
(NOT AVAILABLE FOR -21 THROUGH -24 LEAD STYLES)
-S: SELECTIVE (HEAVY GOLD)-SPECIFY -S IN CONTACT SUFFIX -XX
-H: HEAVY GOLD- SPECIFY -H IN CONTACT SUFFIX -XX
-F: FLASH GOLD SELECTIVE (SEE PP-C-15-X-F)
-TL: TIN/LEAD -SPECIFY -TL IN TERMINAL SUFFIX -XX
(AVAILABLE ONLY ON LEAD STYLES -01.)
-TM: MATTE TIN- SPECIFY -T IN CONTACT SUFFIX -X
-SM: HEAVY GOLD SELECTIVE, MATTE TIN TAIL,
SPECIFY -S IN CONTACT SUFFIX -X
-FM: FLASH GOLD SELECTIVE, MATTE TIN TAIL
SPECIFY -F IN CONTACT SUFFIX -X

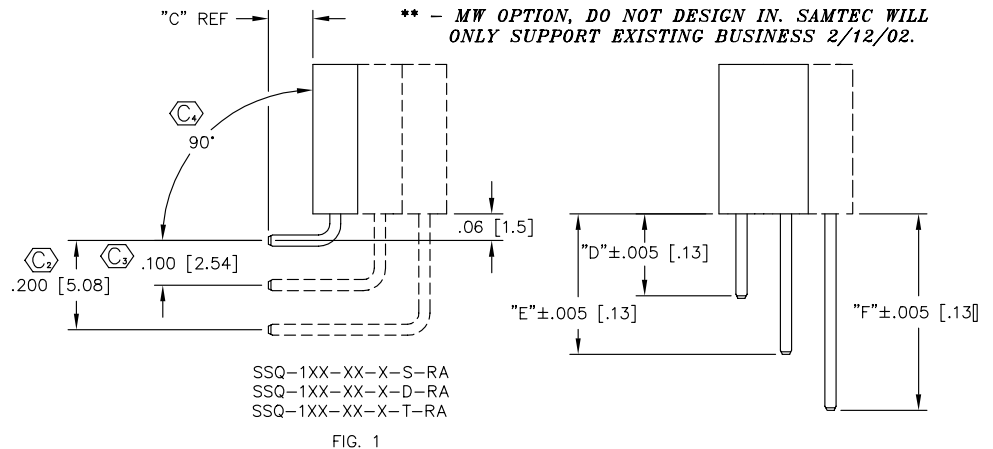
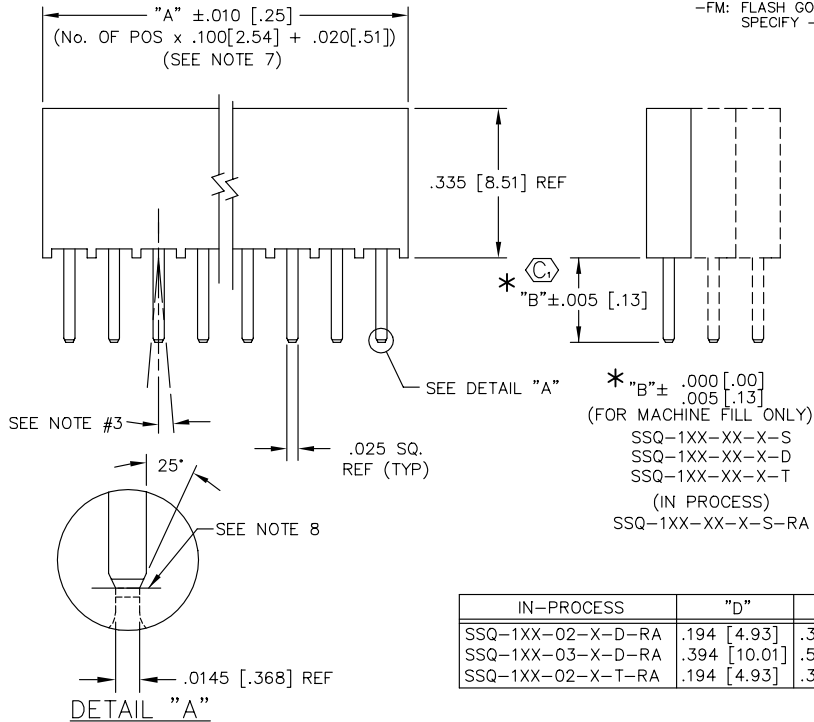
OPTION
** -MW: METAL WASHER (SEE FIG. 4, SHT 3)
(N/A WITH -LL OR -RA)(N/A ON TRIPLE ROW)
(AVAIL. ON 01, 02, 21 & 22 STYLES ONLY)
(AVAIL. ON POS. -02 THRU -30 ONLY)

OPTION
-LL: LOCKING LEAD (SEE FIG. 2, SHT 2)
(N/A IN SINGLE ROW, 1 OR 2 POS)

POLARIZING OPTION
INDICATE POS- SEE FIG. 3 SHT. 3

OPTION
-RA: RIGHT ANGLE (SEE FIG. 1)
(CONTACT -01 N/A)

BODY SPECIFICATION
-S: USE SSW-XX-S
-D: USE SSW-XX-D
-T: USE SSW-50-T
-Q: USE SSW-50-T (TRIPLE ROW
WITH ONLY 2 OUTER ROWS FILLED)
-P: USE SSW-XX-P



- NOTES:
- CONTACT PUSHOUT FORCE: 1.5 lbs. MIN.
 - MAX ALLOWABLE BOW: .003 [.08] INCH/INCH.
 - MAX ALLOWABLE SWAY: 4° (TYP)
FOR HAND FILL & 1° (TYP) FOR MACHINE FILL.
 - MAX ALLOWABLE VARIATION BETWEEN PIN ROWS: .010 [.25]
 - "END WALLS" AFTER CUTTING SHOULD BE .020±.003 [.51]
 - (⊗) REPRESENTS CRITICAL DIMENSION
 - FLASH FROM THE CUT SHALL NOT EXCEED .010" [.25]. NO FLASH IS ALLOWED BELOW LEADS OR IN HOLES OF BODY.
 - SHEAR LOCATION TO BE WITHIN .001" [.03] OF THE BREAK OFF CENTER LOCATION FOR MACHINE FILL.

	IN-PROCESS	"D"	"E"	"F"
SSQ-1XX-02-X-D-RA	.194 [4.93]	.394 [10.01]	-----	-----
SSQ-1XX-03-X-D-RA	.394 [10.01]	.594 [15.09]	-----	-----
SSQ-1XX-02-X-T-RA	.194 [4.93]	.394 [10.01]	.594 [15.09]	

TABLE 2

CONTACT	"B"	"C" REF		
	-S(-RA), -D, -T	-S-RA	-D-RA	-T-RA
-01, -21	.104 [2.64]	N/A	N/A	N/A
-02, -22	.194 [4.93]	.100 [2.54]	.100 [2.54]	.100 [2.54]
-03, -23	.394 [10.01]	.300 [7.62]	.300 [7.62]	N/A
-04, -24	.584 [14.83]	.490 [12.45]	N/A	N/A

MATERIAL:
INSULATOR:
PRIMARY MATERIAL: LCP
COLOR: BLACK

TERMINAL:
PHOSPHOR BRONZE

EXISPROD\ASSEMBLY\100
SSQ-ASM

samtec

520 PARK EAST BLVD. NEW ALBANY, INDIANA 47150
PHONE (812) 944-6733 P.O. BOX 1147
CODE 55322

MADE BY: PURVIS 6-12-87

SSQ-1XX-XX-XX-X-XX-XXX-XX-XX
SHEET 1 OF 3

PROPRIETARY NOTE
THIS DOCUMENT CONTAINS INFORMATION CONFIDENTIAL AND PROPRIETARY TO SAMTEC INC. AND SHALL NOT BE REPRODUCED OR TRANSMITTED TO OTHER DOCUMENTS OR DISCLOSED TO OTHERS OR USED FOR ANY PURPOSE OTHER THAN THAT FOR WHICH IT WAS OBTAINED WITHOUT THE EXPRESSED WRITTEN CONSENT OF SAMTEC INC.